



Iowa Ag News – Cattle on Feed

Iowa Field Office · 210 Walnut Street Ste 833 · Des Moines IA 50309 · (515) 284-4340 · (800) 772-0825
fax (515) 284-4342 or (800) 719-1794 · www.nass.usda.gov/ia

Cooperating with the Iowa Department of Agriculture and Land Stewardship

April 20, 2012

Media Contact: Greg Thessen

Cattle on Feed

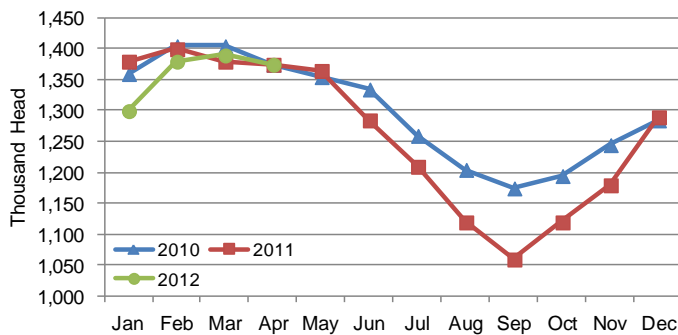
Cattle and calves on feed for slaughter in Iowa for all feedlots totaled 1,375,000 on April 1, 2012 according to the USDA, National Agricultural Statistics Service, Iowa Field Office. The inventory is down 1 percent from March 1, 2012 but unchanged from April 1, 2011. Feedlots with a capacity greater than 1,000 head had 670,000 head on feed, unchanged from last month but up 3 percent from last year. Feedlots with a capacity less than 1,000 head had 705,000 head on feed, down 2 percent from last month and down 3 percent from last year.

Placements during March totaled 133,000 head, a decrease of 1 percent from last month and down 17 percent from last year. Feedlots with a capacity greater than

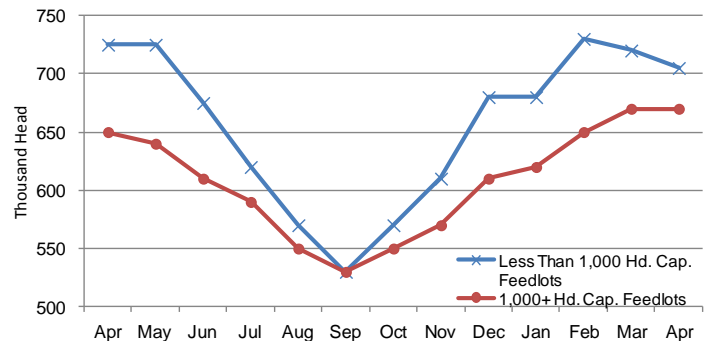
1,000 head placed 73,000 head, down 14 percent from last month and down 10 percent from last year. Feedlots with a capacity less than 1,000 head placed 60,000 head. This is up 20 percent from last month but down 25 percent from last year.

Marketings for March were 144,000 head, up 21 percent from last month but down 9 percent from last year. Feedlots with a capacity greater than 1,000 head marketed 71,000 head, up 15 percent from last month but down 9 percent from last year. Feedlots with a capacity less than 1,000 head marketed 73,000 head, up 28 percent from last month but down 9 percent from last year. Other disappearance totaled 4,000 head.

Cattle on Feed, Inventory on all Feedlots, Iowa: 2010-2012



Cattle on Feed, Inventory by Feedlot Capacity, Iowa: Past 12 Months



All Cattle on Feed, Iowa

Item	Lots 1,000+ Head (1,000 Head)	Lots Less than 1,000 Head (1,000 Head)	All Lots (1,000 Head)
Cattle on Feed, March 1, 2012	670	720	1,390
March Placements	73	60	133
March Marketings	71	73	144
March Other Disappearance	2	2	4
Cattle on Feed, April 1, 2012	670	705	1,375

Cattle on Feed: Number on Feed, Placements, Marketings, and Other Disappearance by Month, 1,000+ Capacity Feedlots

[Cattle and calves on feed are animals for slaughter market being fed a ration of grain or other concentrates and are expected to produce a carcass that will grade select or better.]

State	Cattle on Feed April 1			Placements during March			Marketings during March			March Disappearance other than Slaughter ¹		
	2011	2012	'12 as % of '11	2011	2012	'12 as % of '11	2011	2012	'12 as % of '11	2011	2012	'12 as % of '11
	(1,000 Head)	(1,000 Head)	(Percent)	(1,000 Head)	(1,000 Head)	(Percent)	(1,000 Head)	(1,000 Head)	(Percent)	(1,000 Head)	(1,000 Head)	(Percent)
Arizona	276	278	101	33	27	82	25	27	108	1	1	100
California	450	490	109	48	53	110	55	61	111	3	2	67
Colorado	1,090	1,070	98	215	160	74	190	175	92	5	5	100
Idaho	220	225	102	35	34	97	34	38	112	1	1	100
Iowa	650	670	103	81	73	90	78	71	91	3	2	67
Kansas	2,190	2,170	99	415	375	90	435	395	91	10	10	100
Nebraska	2,380	2,530	106	390	440	113	430	460	107	10	20	200
Oklahoma	355	320	90	75	56	75	78	74	95	2	2	100
South Dakota ..	265	255	96	46	45	98	44	48	109	2	2	100
Texas	2,770	2,780	100	490	430	88	540	470	87	10	20	200
Washington	207	233	113	33	37	112	28	36	129	3	1	33
Other States ...	404	461	114	53	62	117	53	63	119	3	3	100
United States .	11,257	11,482	102	1,914	1,792	94	1,990	1,918	96	53	69	130

¹Includes death loss, movement from feedlots to pasture, and shipments to other feedlots for further feeding.

Cattle on Feed: Number on Feed by Class, 1,000+ Capacity Feedlots by Quarter, State, and United States, 2011-2012

State	Steers & Steer Calves			Heifers & Heifer Calves			Cows & Bulls		
	April 1, 2011	January 1, 2012	April 1, 2012	April 1, 2011	January 1, 2012	April 1, 2012	April 1, 2011	January 1, 2012	April 1, 2012
	(1,000 Head)	(1,000 Head)	(1,000 Head)	(1,000 Head)	(1,000 Head)	(1,000 Head)	(1,000 Head)	(1,000 Head)	(1,000 Head)
Arizona	268	276	274	8	3	4	0	0	0
California	390	440	425	59	69	65	1	1	0
Colorado	740	745	730	345	400	335	5	5	5
Idaho	120	123	131	94	106	92	6	1	2
Iowa	460	450	480	190	170	189	0	0	1
Kansas	1,220	1,160	1,180	965	1,085	985	5	5	5
Nebraska	1,480	1,530	1,530	890	980	980	10	40	20
Oklahoma	210	215	200	145	160	120	0	0	0
South Dakota ..	135	131	138	114	101	100	16	28	17
Texas	1,680	1,730	1,610	1,090	1,209	1,169	0	1	1
Washington	135	150	143	68	80	88	4	2	2
Other States ...	281	331	333	122	133	127	1	1	1
United States .	7,119	7,281	7,174	4,090	4,496	4,254	48	84	54

UNITED STATES CATTLE ON FEED

Cattle and calves on feed for slaughter market in the United States for feedlots with capacity of 1,000 or more head totaled 11.5 million head on April 1, 2012. The inventory was 2 percent above April 1, 2011. The inventory included 7.17 million steers and steer calves, up 1 percent from the previous year. This group accounted for 62 percent of the total inventory. Heifers and heifer calves accounted for 4.25 million head, up 4 percent from 2011.

Placements in feedlots during March totaled 1.79 million, 6 percent below 2011. Net placements were 1.72 million head. During March, placements of cattle and calves weighing less than 600 pounds were 390,000, 600-699 pounds were 300,000, 700-799 pounds were 500,000, and 800 pounds and greater were 602,000.

Marketings of fed cattle during March totaled 1.92 million, 4 percent below 2011. **Other disappearance** totaled 69,000 during March, 30 percent above 2011.